



KODAK S2060w/S2080w Scanners

## Fast. Accurate. Connected.

Connected sheet-fed document scanners that never compromise on image quality or performance.

The connected sheet-fed KODAK S2060w/S2080w Scanners create a productive shared network scanning experience packed with advanced technology to deliver high-quality images directly to the cloud or line of business applications.



### Automation made easy

Simple, intuitive, and easy to share



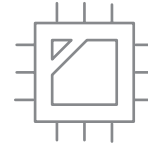
### Scan to folder and cloud destinations

Up to 20 standard destination options per user



### Secure workflows and access

Assign PIN codes to unlock user-specific jobs



### Embedded Image processing

27 onboard image enhancement features



### RESTful API Integration

Directly scan into any business application

## Flexible Connections

KODAK S2000w Series Scanners are designed to sit anywhere within your organization, with built-in 802.11 b/g/n wireless and enterprise-level security or wired Gigabit Ethernet for direct on-premises network connectivity.

## Your Images, Only Better!

### The best image possible

Brighter, sharper images that eliminate shadows caused by folds or wrinkles, thanks to our unique **Dual Light Illumination** technology.

### A Perfect Page every time

No blur, no spots, just a clean, well-cropped image ready for your eyes. Some say, "even better than the original."

### Exceptional accuracy

Easily create searchable documents where every word can be found with up to 20% higher optical character recognition (OCR)\* accuracy versus competitive devices.

## Unique Document Separation and Protection

### Active separation technology

The scanner's unique **Active Feeding System** (AFS) uses reversing rollers that separate each page and lever arms to jog and straighten the paper before entering the scanner.

### Safe document technology

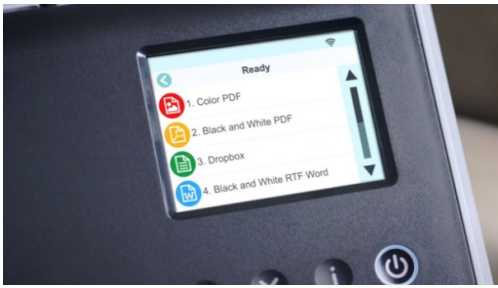
Intelligent **ultrasonic sensors** monitor each piece of paper as it passes through the feeding mechanism, ensuring no original documents are missed.

### Intelligent document protection

The scanner has a sensitive microphone that prevents damage to documents. When it hears paper crumpling the scanner immediately stops to minimize damage.

### Smooth exit technology

Our **Controlled Stacking** technology adjusts paper speed and safely guides documents into the exit tray, ensuring neat and orderly document stacking every time.



## Easy Operation and Scanning Automation

Designed to provide the most simple and intuitive scanning experience, the KODAK S2060w/S2080w Scanners include a color interface for easy one-touch scanning and viewing device status.

### One-touch workflows

Turn manual scanning tasks into automated workflows for maximum efficiency. Easily configure up to 20 routine scanning tasks per user right on the scanner or scan directly into your line of business applications via RESTful API.

## Kodak S2060w/S2080w Scanners

Specifications	
Throughput Speeds BW/grayscale/color	<b>S2060w:</b> Up to 60 ppm/120 ipm; <b>S2080w:</b> Up to 80 ppm/160 ipm
Recommended Daily Volume	<b>S2060w:</b> Up to 9,000 pages per day; <b>S2080w:</b> Up to 12,000 pages per day
Feeder Capacity	Up to 80 sheets of 80 g/m <sup>2</sup> paper
Connectivity	USB 3.2 Gen 1x1, USB 2.0 compatible, Wireless Network 802.11 b/g/n and 10/100 Ethernet
Media Handling	Min. Paper Size: 52 mm x 52mm; Max Paper Size: 216 mm x 3000 mm; Paper Thickness & Weight: 27-433 g/m <sup>2</sup> paper, Hard card thickness up to 1.25 mm
Acoustical Noise	Off or Ready mode: < 20 dB(A), Scanning: <50 dB(A)
File Format Output	BMP / JPEG / Single-page TIFF / Multipage TIFF / PDF/A-2b / PNG / RTF / XLSX, DOCX, PPTX
Operator Control Panel	89mm Color touch screen
Paper Handling Features	Active feeding (AFS), Ultrasonic Multi-feed with Length detection, Intelligent Document Protection, Controlled stacking
Power Consumption	Off: <0.5 watts; Sleep mode: <3.0 watts; Running mode: <36 watts
Electrical Requirements	100-240 V (International); 50-60 Hz
Dimensions	Weight: 3.3 kg Depth: 204 mm, not including input tray and output tray, with input tray 269 mm Width: 312 mm Height: 182.5 mm, not including input tray, with input tray 231.6 mm
Bundled Software	TWAIN, ISIS, WIA Drivers; Smart Touch, KODAK Capture Pro Software Limited Edition (via web download)
Supported Operating Systems <sup>1</sup>	WINDOWS, LINUX, CITRIX Certified
Optional Accessories & Consumables	Passport Flatbed Accessory, Integrated A4/Legal Flatbed Accessory, A3 Size Flatbed Accessory Carrier Sleeves (5 PACK), Feed Roller Kit
Warranty	3-year, next business day, Advanced Unit Replacement warranty

<sup>1</sup> Visit [AlarisWorld.com/go/S2000](http://AlarisWorld.com/go/S2000) for a complete list of Operating Systems.

## Capture & Intelligent Document Processing Solutions That Make Sense!

### KODAK Capture Pro Software

Advanced capture software that makes it easy to scan, process, utilize, and manage documents and data from scanned documents.



Scan To Learn More  
About Capture Pro Software

### KODAK Info Input Solution

Intelligent document processing software that automates and simplifies the journey from document arrival to data processing – quickly, accurately, and reliably.



Scan To Learn More  
About Info Input Solution

## ENVIRONMENTALLY APPROVED

**EPEAT® Gold:** KODAK S2000w Scanners have achieved the status of EPEAT® Gold Registered and meet ENERGY STAR® guidelines for energy efficiency and for the reduction of hazardous substances and waste products.

**ENERGY STAR®** certified scanners are independently certified to save energy without sacrificing features or functionality.

To learn more about our EPEAT status, visit [AlarisWorld.com/go/EPEAT](http://AlarisWorld.com/go/EPEAT)

From digitization to transformation, Kodak Alaris is there from the start. We transform documents and data into information better than anyone else bringing Speed, Accuracy, and Profitability to your business. To learn more, visit [AlarisWorld.com](http://AlarisWorld.com)



Want to learn more?  
[AlarisWorld.com/go/S2000w](http://AlarisWorld.com/go/S2000w)

Contact us:  
[AlarisWorld.com/go/contactus](http://AlarisWorld.com/go/contactus)



**Kodak alaris**

All trademarks and trade names used are the property of their respective holders.

The Kodak trademark and trade dress are used under license from Eastman Kodak Company.

© 2024 Kodak Alaris Inc.  
TM/MC/MR: Alaris  
01/24