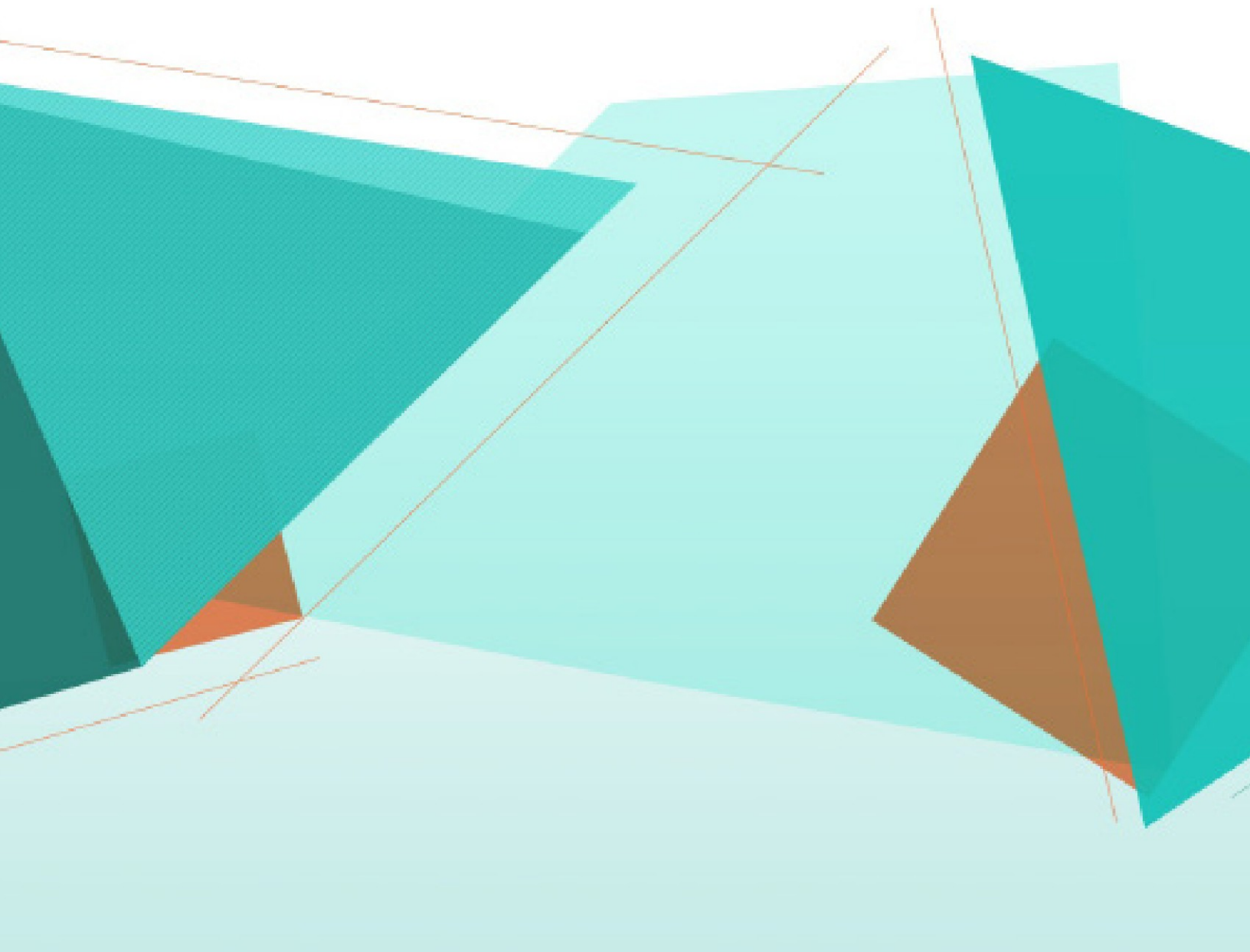


# Kodak

## Info Input Solution

Release Notes



# Contents

New Features / Enhancements .....	1
Fixed Issues .....	6
Known Issues .....	16
Patch Deployment Instructions .....	17
System & Environment Requirements .....	19

# 1 New Features / Enhancements

Info Input Solution is a web-based scanning software solution that enables users to scan documents from any remote location and deliver the captured information to an Enterprise Content Management system, for storage or further processing.

New features in Info Input Solution v6.2.14:

Export Service:

- FileNet P8: Added the option to delete the output images when the export is successfully finished.
- FileNet P8: Introduced two new options in the configuration GUI for the **Connect Timeout** and the **Read Timeout** properties.
- SharePoint Online: Added support for the Microsoft Content Types.

Database:

- Upgraded the PostgreSQL libraries to the latest 42.6.0 version.

New features in Info Input Solution v6.2.13:

Database:

- Modified index on Nodes table to use priority on descending order, to optimize the performance.

Core Service:

- Updated the slf4j project from v.1.5.8 to v.1.7.32.

Extraction / Intelligent OCR:

- Hyperscience: The page rotation limit is changed to unlimited.

New features in Info Input Solution v6.2.11:

API / Scripting:

- Added the ability to update a Task's (folder-document) priority through scripting, using the **getPriority** and **setPriority** methods.

Import Service:

- The Import Service polling logic will not wait for the polling period on the first cycle.

Export Service:

- OpenText Content Server: Optimized the logic that checks for already existing folders during upload.
- Foxit Rendition: Added enhanced logging information and introduced a second file deletion attempt to avoid cases where the file is locked from a different transaction.

New features in Info Input Solution v6.2.10:

HTML Service:

- Security check is not by-passed when the Client has advanced a node to index step.

HTML Client:

- Added the Task Filter functionality in the *Open* and *Select next Indexing Task* windows.

Authentication Service:

- Login with the Thick Client fails in some random occasions.

New features in Info Input Solution v6.2.8:

HTML Service:

- Optimized the Service HTML Janitor to be multi-threaded.

New features in Info Input Solution v6.2.7:

HTML Client:

- Added the license and version information as a tooltip when hovering the mouse over the Info Input Solution logo. The same information is also displayed in the "About" window.
- Moved the Image Viewer progress line to the bottom of the Toolbar.
- Imprinter: Truncate the imprinting string if it exceeds the character limit.

Authentication Service:

- Added support for the IdP initiated flow.

Export Destinations:

- OpenText Content Server: Added new options to handle cases of duplicate filenames in the Content Server.
- OpenText Content Server: Added support for the OTCS Web Services to be deployed on IIS (Internet Information Services).

New features in Info Input Solution v6.2.6:

Extraction / Intelligent OCR:

- Google Document AI: Updated the private endpoint handling to conform with official Google Cloud private endpoint formats.

New features in Info Input Solution v6.2.5:

HTML Client:

- Added the Split Batch functionality.
- Added the imprinting functionality.
- Enhanced the driverless scanning to support the v2 API.

Thick Client:

- Added support for modern authentication methods in the Thick Client.
- Changed the "Concurrent Connections" to "Devices" for the Mobile licenses in the Licensing Administration.

Export Destinations:

- Content Server Export: Assign a Category to a dynamically created Content Server folder.
- Content Server Export: Map index fields to an attribute of type "set" of a Content Server Category.
- Documentum DFC: Upgraded the Documentum libraries to use the latest version 22.2.

- Foxit Rendition: Enhanced the plugin with additional logging information.

#### Workflow:

- Added the ability to call the function `IPage.detectIsBlank` from a server-side script Step.

#### Scan / Import:

- Separated the rasterization options for PDFs and MS Office files.

#### Extraction / Intelligent OCR:

- Hyperscience: Added the ability to display the highlight zone even in fields that do not return any value.
- Added the ability to repeat / refire the highlight animation by pressing the Control button.
- Google Document AI: Upgraded the engine's preconditions for the different processors according to the official standards.
- Google Document AI: Added an option to use a private Google endpoint instead of the standard.

#### API / Scripting:

- Implemented the `setIndexMode` function in the Job Script to run asynchronously.

#### Export Service:

- Nuance: It will now generate searchable PDF files in Fast Web View format (`PDF Linearization`).

#### Image Enhancements:

- Added the aggressiveness parameter in the Despeckle Image Operation.

#### New features in Info Input Solution v6.2.4:

##### Export:

- Implement a PDF split logic for size limit.

#### New features in Info Input Solution v6.2.2:

##### HTML Client:

- Added one additional parameter to the `ApplicationDialog` in order to make it movable.

##### Export:

- IBM FileNet P8: Added support for the ID file type in the export configuration mappings.
- OpenText Application Content Management: Added the 20.3 version in the available options of the supported versions dropdown list.

##### Job Setup:

- Enhanced the default barcode engine for Windows with the `Invert`, `Despeckle`, `Dilate`, `Erode` and `Sharp` preprocessing options.

##### HTML Service:

- Integrated the new PixTools for Web Runtime CE 22.2 (re-brand of the Cloud Capture Toolkit).
- Improved the initialization mechanism of the SVG elements.

##### Thick Client:

- Updated EZTwain library to the latest version 4.

New features in Info Input Solution v6.2.1:

Export:

- Opentext ApplicationContentManagement Export: Add a new Merge-Append conflict action in case the same file already exists.
- Opentext ContentServer Export: Add the option to delete the previous exported images/files after being uploaded to Content Server.
- Salesforce Export: Update the Salesforce Export Destination to support the upload of Salesforce files, not just attachments.

Extraction / Intelligent OCR:

- Add the Nuance soft timeout parameter in the Nuance Extraction profile.
- Improved the Google Vision and Google Document AI text converter.
- Error in the Intelligent OCR step, when an extraction profile is selected to be used by a specific Document Class or Form Type.
- Upgrade the Google storage SDK to the latest versions.
- Add a custom logic to update the confidence level of an index field, when Hyperscience returns a specific exception.

HTML Client:

- Optimized the styles customization in the HTML Client.

New features in Info Input Solution v6.2:

Image Enhancement Workflow step:

- Added new Image Enhancement / Processing Workflow step, which performs one or more image operation (s) to the scanned / imported images.

Database:

- Added support for the Postgre SQL as the Application Database.
- Added more statistical tables in the Database.

Import Server:

- Updated the email import to use the Microsoft Graph API for the Exchange Server.

Extraction / Intelligent OCR:

- Added support for Amazon Textract Analysis and Expense APIs, which can process invoices and structured forms.
- Added support for synchronous Intelligent OCR engines for documents with a few pages.
- Enhanced the Extraction and Intelligent OCR Workflow steps to use an alias from a previous Image Enhancement step.

Classification:

- Enhanced the Classification Workflow step to use an alias from a previous Image Enhancement step.

#### Batch Manager:

- Added the ability to change the Workflow step for an item and send it to "Finished".

#### Export:

- Foxit Rendition: Added a new export plugin for the Foxit Rendition.
- Images Export: Added support to export using an alias from a previous Image Enhancement Workflow step.

#### HTML Client:

- Added the ability to search a Form Type name from the dropdown list in a more optimized way.
- Enhanced the console logs with more details.

#### Authentication:

- Added support for the Kerberos Client/Server secure authentication, using strong cryptography.

#### ClassLoader:

- Added the ability to use different classloaders for all the 3rd party integration code. This change affects the Core Service, HTML Service, Export Service and Import Service. More details can be found in the Developer's Guide.

#### Reporting:

- Added support for reporting using the Microsoft Power BI engine.

#### Java:

- Upgraded the bundled Java to a newer OpenJDK version 1.8.0\_322.

#### Apache Tomcat:

- Upgraded the bundled Apache Tomcat 8.5 to the latest 9.0.60.

#### Security alert for log4j vulnerabilities:

- Updated all log4j libraries to the latest non-vulnerable version 2.17.1.

#### Security alert for commons-io vulnerabilities:

- Updated all commons-io libraries to the latest non-vulnerable version 2.11.0.

#### Licensing:

- Added a new license that will allow full-page OCR only, in an Intelligent OCR Workflow Step.

## 2 Fixed Issues

Fixed Issues in Info Input Solution v6.2.14:

Extraction / Intelligent OCR / Classification:

- Microsoft Form Recognizer: The values extracted for ID cards are not always the same as the ones returned from the engine.
- Nuance OCR: The Keyword Classification failed in cases where the keyword zone was close to the template image's edge.
- Nuance OCR: Changed the confidence calculation for Zonal Extraction.
- The extraction fails with `FileNotFoundException` exception on random documents in large batches, if they are previously forked.

Scan / Import:

- A PDF fails to be imported when the system locale is Japanese because of the unsupported charset cp932.
- A specific type of container PDF fails to be rasterized during import.
- If a PDF file fails to be rasterized during import, it is not imported as an eDOC.
- Specific images from old Fax machines are stretched after import.
- The password protected zip files fail to be imported.

HTML Client:

- The Folder Class selection dropdown list does not display the correct Folder Class names.
- An eDoc file fails to be downloaded from the HTML Client, if it was previously imported from the Thick Client or the Import Service.
- When navigating through the nodes in the Indexing panel, the wrong node may be displayed in the View, if the previous node contained hidden index fields.
- A user is not able to copy the row data from the Open, Select Next Indexing Task, and Batch Manager windows.

Export Service:

- Nuance: When creating Searchable PDF/A files using Nuance, the JPEG2000 Lossless compression type is not applied.

Image Enhancements:

- Certain images failed during the AutoRotate or Remove Black Border image operations when trying to read information from the ICC profile.

Core Service:

- When multiple Clients try to lock the same task using the Get Next Indexing Task functionality, the `Error in getNextNode: scanserver.model.ScanServerException: Error while trying to lock process` error is produced.

Database:

- SQL Server: The Get Next tasks operation takes a long time to fetch items when there is a large amount of



tasks in the queue.

Import Service:

- An empty document is created when a file fails to be imported by the Import Server.

Fixed Issues in Info Input Solution v6.2.13:

Classification:

- The Classification fails when an image smaller than the Feature Classification anchor area is used.

Scan / Import:

- In some rare occasions, barcodes that are burned as annotations on a page, may get lost during import.

Export Service:

- The Images Export output path may get changed if a change in the Release Destination is made while a batch is already in export processing.
- Box Export: Removed the timeout parameter during export.
- OpenText Content Server: The export takes too much time to finish if the output destination contains a very large number of nodes / business workspaces.
- OpenText Content Server: The folder categories are not carried along the exported documents. on some rare occasions.

HTML Client:

- Specific MS Excel files are falsely identified as zip files.
- Specific validly signed PDFs are shown as invalid when imported in the HTML Client.

Core Service:

- A **ConstraintViolationException** is produced when two different services try to delete the same stale session.

Extraction / Intelligent OCR:

- Microsoft Form Recognizer: Batches are stuck in Processing state at the Intelligent OCR step.

Fixed Issues in Info Input Solution v6.2.12:

Export Service:

- The export service will not increase the export attempts in case a configuration parameter is missing and this will cause it to try indefinitely.
- Database Export: The export fails when a stored procedure contains more than 9 arguments.

Database:

- The **could not advance using next()** error is produced when two Clients try to open the same batch at the same time, using the *Get Next Indexing task* functionality.

Core Service:

- The batch cleanup procedure does not run under specific circumstances.

#### Thick Client:

- Cannot delete custom Permissions even if they are removed from all Job Setups.

#### Fixed Issues in Info Input Solution v6.2.11:

##### Fork / Join:

- A task that was previously forked, will remain in Ready state forever in an upcoming Fork step, if its structure is changed in the meantime.
- When a task that was previously forked, is located on a step with custom Workflow permission(s), attempting to open the Batch Info dialog, produces the following error:  
`javax.persistence.PersistenceException: org.hibernate.exception.GenericJDBCException: could not execute query`

#### Thick Client:

- Test Index zone dialog: When changing the OCR engine and re-running the results, the Results sub-dialog is not paint correctly.
- Test Index zone dialog: When changing the OCR engine and re-running the results, the extraction is not running if the profile is not authenticated.
- The Batch Manager fails to open if a Task (Batch/Folder/Document) has a null creation date.
- The indexing pane may not show up in case a specific configuration with default numeric values is used.

#### HTML Client:

- The first page of a document is not displayed, when a document is selected from the Batch tree, in the Scan single-page view mode.
- Task Filtering: When a batch is already opened in the Client and a new attempt to open another batch is tried the first batch will lock and seem in Processing state.
- The Action type `NewDocumentInFolder` is not called when the function `isContextActionEnabled` is triggered.
- The error details in the Batch Manager are not displayed in read-only mode.
- The text inside the Shortcut Window is not translated.

#### Licensing:

- The Extraction tokens are consumed even in cases where no OCR/OMR takes place.

#### Extraction / Intelligent OCR:

- Hyperscience: Specific PDF documents will cause the process to fail with `scancommon.extract.OcrException: No segments in page` or `java.lang.NullPointerException` because they are identified as empty pages.
- Hyperscience: When opening a batch in the Client, that was previously processed with IDP, its highlight zones will not be displayed and the `TypeError: Cannot read properties of undefined (reading 'rotation')` error will be displayed in the console.
- Hyperscience: A batch stays in Processing state forever, if the submission is deleted from the HS side.

#### Export Service:

- CSV Export: the text qualifier is not applied in list index fields.
- OpenText Content Server: Cannot export documents to folders under the Business Workspace object.

#### Core Service:

- The Folder Cleanup mechanism will run always and not only when the `batch.age.threshold` is set.

#### HTML Service:

- When a stored batch is unrecoverable, a request will be sent to the Core Service, to delete this batch.

#### Job Setup:

- When duplicating a Document class, a cluster index zone will no longer be associated to the index fields.

#### Scan / Import:

- A specific kind of container PDF fails to be rasterized during import.

#### Fixed Issues in Info Input Solution v6.2.9:

##### HTML Client:

- The Task Filtering is not working correctly when the Client language is not English.
- The Job Selection dropdown list in the *New Batch Dialog* cannot be manipulated programmatically.

#### Fixed Issues in Info Input Solution v6.2.8:

##### Job Setup:

- The extraction profile that is selected in a PDF export configuration to add text layer from OCR, is not reset even if the specific configuration is not used.

#### Export Service:

- Export to PDFs that contain text layer from the Nuance engine fails with `Infinity is not a finite number` error in some occasions.
- The export service may stick in an idle state that will not process any more tasks, if a post-processing error occurs.

#### Thick Client:

- The index zone highlight remains in the same zone if the next field does not have an associated index zone.
- In some rare occasions, an image may turn to black after a rotation is performed. The issue was caused by the EZTwain third-party library which is now downgraded to a lower minor version.

#### HTML Client:

- The node names fail to be updated if their names come from a barcode expression.
- The `setParsedValue` method has different behavior when used in the Thick and in the HTML Client for date field types.
- When the `setValue` method is used in a date field type, the display value does not correspond to the format that is defined in the Job Setup.
- The `addOption` method takes too long to add values to a list index field and may cause the Client to freeze.

## Fixed Issues in Info Input Solution v6.2.7:

### Scan / Import:

- Specific images with Transparency may not be displayed correctly in the Clients.

### Export Service:

- Specific images fail to be exported as PDFs after a text layer from Google and Google Document AI OCR engines is added to them, due to missing fonts.

### HTML Client:

- The browser may freeze under special conditions and if specific actions, such as moving, scrolling and dragging are performed.
- Date/Time elements: Double-clicking outside of the date picker box will cause it to close, when it shouldn't.
- The *split* action is performed when trying to delete a page using the *Delete* button in the keyboard.
- When the error message is too large, the error dialog will not resize properly.
- When re-locking a batch in the Client, the suspend and close buttons remain disabled.
- In the "Open" and "Select next indexing task" windows, the Forked items (folders, documents) are not filtered against the BatchID of the parent batch.
- Password protected files fail to be imported.
- Don't allow the pending upload procedure to be aborted when closing/suspending the batch.

### Export Destinations:

- OpenText Content Server: A batch fails to be exported if the same Category is assigned to the exported document and its parent folder.
- OpenText Content Server: Exporting to Content Server may lead to Memory leak issues.
- OpenText Content Server: Exporting to Content Server that is hosted on IIS, will eventually fail with time out error.
- SharePoint Online: An Invalid folder path variable in the export configuration will cause an error during export.

### Thick Client:

- In some rare occasions, a color PDF cannot be converted to Black & White because of wrong Color Space (ICC-based).
- Batch Manager: the refresh timer fails to restrict values under the threshold value of 10 seconds.
- Batch Manager: The Batch Manager becomes slow when there are too many rows in grouping.

### Database:

- OpenEdge Progress: Database validation fails in Advanced SQL Script with syntax error.
- Azure SQL: The Schema creation fails with the **The credentials used must allow for schema creation** error.
- The Batch Name cannot be more than 255 characters.

### Image Enhancements:

- An Image Enhancement profile is lost, when it is used in multiple Job Setups.
- Specific Image operations inside an Image Enhancement profile, may block the HTML Client from starting.
- Some image operations fail to be performed when the images have a very low positive DPI value.

#### HTML Service:

- Fixes and optimizations in the `NodeUploadManager` and `NodeUploadWorker` that will improve the batch upload speed in high-volume systems.
- Requesting a thumbnail before the scanned blob is uploaded to the HTML service, will lead to incomplete information in the database which, in turn, will lead to errors in the logs.
- The `NodeUploadWorker` will bypass security checks when uploading batches.

#### Authentication Service:

- The Authentication service fails to start when there are missing values in the `application.yml` configuration file.

#### Fixed Issues in Info Input Solution v6.2.6:

##### Export Destinations:

- OpenText Content Server Export: Export fails if an index field of type Date is mapped to a Content Server date attribute and is left empty.

#### Fixed Issues in Info Input Solution v6.2.5:

##### HTML Client:

- Any CSS style that is configured in the Advanced Indexing Form Designer, is not applied.
- The HTML Client `index.jsp` is not encoded using UTF-8, this results to not properly format some language characters.
- The error `Failed to execute 'removeChild' on 'Node': parameter 1 is not of type 'Node'` will show up when trying to delete a driverless scan source.
- Barcode detection is not working when the barcode extraction profile is used in different job modules.
- QR/Barcodes with Arabic text, are not displayed correctly in the HTML Client
- The error dialogs with stacktraces, do not display the correct filenames and line numbers.
- When the duplicate documents dialog is open, selecting the X button or pressing ESC will actually proceed to documents duplication.
- Some Fonts may not be downloaded in some environments because of an additional slash in the URL.
- The batch will not be recovered if the inactivity time out is exceeded.
- When using custom node names, the name of the first document will not be updated in case a custom property is used and is set via scripting.
- Advanced Indexing Forms: The Display label is not shown correctly when the text size is large.
- Fixed the way that the local Scan Profiles are saved and loaded so they are not affected by clearing the browser's cache.
- EDocs are not saved with the correct name when downloaded from the HTML Client.

##### Thick Client:

- Cannot set the simplified Chinese language as a default preference; in the next launch, it will reset to traditional Chinese.
- Images will be converted to color when applying an image enhancement operation during scan such as deskew, or Crop Black Border, or fill black border.
- A wrong logon time is displayed in the Active Users window, when the Application Core machine is on a different time zone than the Client machine.

#### Scan/Import:

- Portfolio PDF files will add an adobe image in the batch and will not create an Edoc.

#### Import Service:

- An **out of memory error** may show up when importing large PDF files, this error message cannot be overcome by increasing the heap size.
- Large PDF files cannot be processed by the PDFium library.
- Email Import: A non-image inline file will be ignored if the Discard inline images option is enabled.
- Email Import: in case the imported Email contains multiple HTML elements only the first one will be imported.
- Email Import: When importing emails that do not strictly follow the java MIME spec, the error **.io.FileNotFoundException** may show up. Added functionality to use the runtime properties **-Dmail.mime.decodeText.strict=false** and **-Dmail.mime.decodeFilename=true**.
- Email Import: The error message **javax.mail.MessagingException: Unsupported content-type multipart/report** may show up in case the **include the email header** job level import option is selected and the HTML version of the email does not contain the **head tag**.
- An import service that is remotely connected to the Core Service, may gets disconnected during uploading a batch.
- KofaxPlugin: Error when loaded with the new custom external class loader.
- Kodak INFuse: The scanned images are displayed in a wrong order when scanning single tiffs or single PDFs.

#### Export Destinations:

- FileNet P8: The error message **NegativeArraySizeException** may show up when trying to upload a large file.

#### Extraction / Intelligent OCR:

- Nuance: The character recognition settings do not work as expected.
- Client-side barcode extraction may produce wrong results because of a false calculation of the barcode rectangles.
- In some occasions, the display zone in a cluster index zone may not be selected correctly, based on the highest confidence.
- Hyperscience: The highlight zones are not displayed for specific HS layout variation.

#### Database:

- Azure SQL: Unable to set a database name that contains the dash symbol "-".

#### Image Enhancements:

- The configuration settings in a Crop Image operation may not be saved correctly.

#### Fork / Join:

- The `Ambiguous column name 'parentNodeId'` error occurs in a server-side scripting step that follows a Fork in folder level.

#### Fixed Issues in Info Input Solution v6.2.3:

##### Thick Client:

- After a series of actions (split, merge, duplicate, etc), a Folder/Document deletion may cause the Batch Structure to be inconsistent regarding the actual number of nodes displayed. The Batch Structure will be successfully updated when a new page is scanned/imported into the Client

#### Fixed Issues in Info Input Solution v6.2.2:

##### Authentication Service:

- The error `Circular view path [saml]: would dispatch back to the current handler URL` may show up after a successful authentication with SAML, without having any real impact.

#### Fork / Join:

- Forked tasks are exported slower than expected.
- A batch with more than 2100 documents fails to be deleted from the database, if it is returned to any other Workflow step after being exported.

#### Thick Client:

- The document separation from the Job Setup import settings fails if the first page of a document is blank and the blank page detection is enabled.
- The `digest.txt` file is always updated when the `/client` path is triggered.

#### Database:

- The Schema Upgrade fails when upgrading from 6.1.11 (or later) to 6.2.x.

#### Job Setup:

- After upgrading from 4.2.x to 6.2.x, the Job Setup cannot open due to a commented out line of code at the Document level Script.

#### Export:

- SharePoint Online: Export fails if a boolean Metadata type is used in the Mappings and the Authentication method is Active Authentication.

#### HTML Client:

- The Rubik font is not properly rendered on most browsers.

#### Fixed Issues in Info Input Solution v6.2.1:

##### Import Service:

- File Import: Specific .jpeg files with exif info cannot be deleted by the Import Service after they are imported, and they are falsely shown as ignored.

- Email Import: The error message `java.lang.NullPointerException` shows up when importing emails that does not contain the TO property (the email of the recipient).
- Email Import: The error message `Found body part of content-type text/html, but content disposition is inline` shows up when Importing emails with specific format that does not follow the spec for the inline content disposition.
- Email Import: If the name alias of an email addresses does not exists it will show as "null" in the HTML version of the email, or the TXT version of the email.
- Email Import: An Image from an email is not imported for specific emails that does not follow the spec, there is only one Image in the email, and there is no body.
- Email Import: An Image from an email is not imported for specific emails that does not follow the spec for the multipart/alternative sections.

#### Administration Utility:

- The "Use default password" option is disabled when the same Database, Schema and User are selected in a New Database configuration.
- A new Database creation in an SQL Server will fail if the password contains specific special characters.

#### Extraction / Intelligent OCR:

- Specific Job with form parsing OCR using Hyperscience fails in the Intelligent OCR step with `java.lang.NullPointerException`.
- Specific image fails when processed with the Google Vision engine in an Extraction OCR step because Google returns negative word coordinates.
- The Amazon engine cannot be used for zonal extraction.

#### Classification:

- The barcode zones were set outside the image bounds, when they were designed at the images edges.

#### Database:

- Azure SQL: The Filegroup parameter is not added in the statistical tables in the database and causes an error during the upgrade from a previous version.
- The batch cleanup fails when the `batch.age.threshold` is not set to zero.

#### Job Setup:

- Some confidence values are not displayed correctly in the Intelligent OCR configuration window.

#### HTML Client:

- The confidence values after an Intelligent OCR step are not displayed correctly.
- Ugly error message when the user tries to scan and the CCT is unavailable.
- The node names are not dynamically changed during Indexing.
- Some PDFs fail to be imported in the HTML Client with `No ResourceSemaphore registered for scanapp.license.nuance.max_users` error.
- Arabic characters are not displayed correctly in custom components of the Advanced Indexing Form designer.



- The `fieldChanged()` hook function is not triggered when the backspace button is pressed, inside a non-strict List field.
- The columns order in the Batch Manager is restored to its previous state after refreshing.
- An image added as a component in the Advanced Indexing Forms designer at the batch level, is not displayed during runtime.

#### HTML Service:

- Importing and quickly closing a large batch from the HTML Client, could cause a `MaterializeRender` error.
- Large multi-tiff files fail to be uploaded from the HTML Client.

#### Thick Client:

- The Client does not follow the proxy host's exception list rules.

#### Installer:

- A wrong `importtd.properties` file is created in a fresh installation.

#### Export Service:

- Salesforce Export: eDocs with the .mht extension fail to be exported.
- Specific images fail to be exported as PDFs after a text layer from Google or Google Document AI OCR engines has been added to them.
- CSV Export: If a date field is used in the output filename, it is possible to be evaluated with a wrong value, in a multi-threaded document level export.
- Images Export: Images are not converted to Black & White when the auto-annotation option is used.
- Box Export: At some rare cases, the cached folder used to store information about the Box folders and files, fails to be cleared out.
- SharePoint Online Export: The existing Export configuration is reset when exiting and re-entering.
- SharePoint Online Export: Cannot export to the Library's root destination if the Folder Path is left empty.
- SharePoint Online Export: Cannot export to a newly created Document Library, when using the Client Credentials Grant authentication method.

#### Image Enhancement:

- The barcode rectangle stays at the same position after the image is auto-rotated.

#### Job Workflow:

- Documents fail to be exported if the Job Workflow contains two Fork-Join sections.
- If the default Script at any level is completely deleted, the batch will fail at a server-side Workflow step with `java.lang.NullPointerException`.

## 3 Known Issues

Known issues in Info Input Solution v.6.2:

- Advanced Indexing Forms: On some occasions, the Index Fields' display label could be line-wrapped. The text of those labels could be displayed either behind or in front of the actual Index Field. This issue is related to the width of the label text and is due to a major fonts update that has been performed. The issue is fixed with Patch 5 but it may still occur in Jobs created before this fix.
- The password protected MS Office files fail to imported.
- HTML Client: When using the Task Filtering functionality and open a batch while another batch is already opened, the user is not asked to take action and the old batch remains locked indefinitely.

## 4 Patch Deployment Instructions

The cumulative patch 6.2.14 can be deployed on top of any v6.2 patch level Application Server.

Steps for applying the patch:

a) Stop the application:

Windows: Use the Administration Utility (Services tab) to stop all running Windows Services, in the following order. Finally, close the Administration Utility window.

Linux: Stop the server-side processes, using the stop scripts or System V init-compatible scripts provided, in the following order.

1. Info Input Solution Import Server (if installed)
2. Info Input Solution Export (Release) Server
3. Info Input Solution Apache Tomcat Server

b) Take a backup copy of the installation directory, and a backup of the database.

c) Copy the patch distribution archive to the application server and extract the patch distribution archive to the installation directory. This step will overwrite some files and folders of the existing installation. When prompted, the user should confirm file (folder) replace.

b) Some library (jar) files have been updated to latest version with Cumulative Patch 8, so the old version of these files must be removed from the installation directories. When upgrading from a version earlier than 6.3.5, this step can be executed once after the final Patch is applied. We provide the `libs-cleanup.bat` file (for Windows) and `libs-cleanup.sh` (for Linux) under:

`<root_installation>\tools` directory.

Windows environment: Open a new Command Prompt window with administrator permissions, change directory to `<root_installation>\tools`, run the `libs-cleanup.bat` file and follow the steps to verify the deletion.

Linux environment: Change directory to `<root_installation>\tools`, make sure the shell script file is executable (run `chmod +x libs-cleanup.sh`), run the cleanup file (`./libs-cleanup.sh`) and follow the steps to verify the deletion.

The deprecated jar files that must be removed after the deployment of patch 14 are the following:

1st set: `pdfbox-2.0.24.jar`, `fontbox-2.0.24.jar`, `xmpbox-2.0.24.jar` and `jbig2-imageio-3.0.3.jar` from folder(s):

```
<root_installation>\client\lib
<root_installation>\importd\lib
<root_installation>\released\lib
<root_installation>\service-html\WEB-INF\lib
```

2nd set: `postgresql-42.2.23.jar` from folder(s):

```
<root_installation>\server\WEB-INF\lib
<root_installation>\released\lib
```

3rd set: `slf4j-api-1.5.8.jar` and `slf4j-log4j12-1.5.8.jar`, from folder(s):

```
<root_installation>\server\WEB-INF\lib
```

d) This patch may require a Database Schema upgrade.

Start the Administration Utility: at startup, it automatically checks the active Database configuration and performs the required Database Schema upgrade.

Note that, after a Database Schema upgrade, importing Jobs from a previous patch level is not supported.

e) Start the application: start the Windows Services / server processes in the reverse order:

1. Info Input Solution Apache Tomcat Server
2. Info Input Solution Export (Release) Server
3. Info Input Solution Import Server (if installed)

## 5 System & Environment Requirements

### System requirements for the Info Input Solution Application Server:

#### CPU:

- Minimum requirement is 4 cores at 2GHz.
- For high volume systems, the recommended configuration is 12 cores @2.5+ GHz, or 12 cores of older / slower CPUs.
- When the Info Input Solution HTML Client is used by end-users, additional CPU is required for the HTML supporting service/process. The hardware specs depend on the use case and estimated load.
- When the Info Input Solution Classification and Extraction server-side engines are used in the Job Workflow(s), additional CPU is required for the Info Input Solution Core service/process. The hardware specs depend on the use case and estimated load.
- For virtual environments, features like Intel VT-x / VT-d and AMD V / Vi must be supported by the processors, activated on the machine, enabled in the Virtualization product and activated for the virtual machine.

#### Memory:

- Minimum memory size is 4 GB.
- Recommended memory size for high volume systems is 12 GB.

#### Operating System:

- Windows Server 2012 / 2016 / 2019 / 2022.
- Red Hat Enterprise Linux 7 / 8.
- SUSE Linux Enterprise Server 12 / 15.

#### Disk Storage:

- Single server installation: The recommended configuration is a dedicated disk array (RAID 5 or 10) either physically installed on the server, or exported over a dedicated high-speed Storage Area Network (SAN). The minimum configuration is a single disk, again either physically installed in the server, or exported over a SAN.
- Cluster installation: The recommended configuration is a dedicated Network Attached Storage (NAS) unit, using a file system native to the OS of the application servers, connected to the server over a dedicated high-speed network. The minimum configuration is a NAS that can be used by all nodes in the server cluster.
- SMB v3 compatible Windows Server file storage systems are supported.

#### Network:

- Single server: The recommended configuration is separate networks for HTTP, Database and storage traffic, if external storage is used. All networks should be at least 1 Gb and all nodes should be attached to the networks through switches. The minimum configuration for low volume systems is a single 1 Gb network.
- Server cluster: In addition to the single-server recommended configuration, the recommended configuration for a cluster is to provide additional networks for cluster heartbeat and reverse proxy to cluster node HTTP traffic. The minimum configuration for low volume systems is a single 1 Gb network.

## Software requirements for the Info Input Solution Application Server:

Apache Tomcat: version 9.0.60 64-bit (included in the installation package) or any tomcat version minor to 9.0.

Database:

- SQL Server 2014 / 2016 / 2017 / 2019.
- Oracle 11.2 / 12.1 / 18c / 19c.
- PostgreSQL 13 or later

Bundled Database in installer:

If during installation, you choose to install a new instance of SQL Server 2019 Express, the operating system must meet the minimum requirements:

- SQL Server 2019 installer will automatically install/enable Microsoft .NET Framework 4.6.
- Windows Server 2012 R2 require KB2919355 before installing .NET Framework 4.6.

For more information, see Hardware and Software Requirements for installing SQL Server 2017 at the Microsoft website.

## Requirements for Thick Client

Before launching the Thick Client, make sure the user's workstation meets the following pre-requisites.

- Operating Systems: All supported Windows OS versions (Windows 8.1, 10, 11, 2012, 2016, 2019 and 2022).
- All contemporary web browsers are supported: Google Chrome, MS Edge, MS Internet Explorer v11, Mozilla Firefox, Mozilla Firefox ESR.
- The Thick Client application is also offered through web browsers that support java plug in: MS Internet Explorer (v8 up to v11), Mozilla Firefox (v3.6 up to v51), Mozilla Firefox ESR (up to v52).  
Java Runtime Environment version 8, 32-bit and 64-bit, is also required in this case.

## Requirements for HTML Client

Before launching the HTML Client application, make sure the user's workstation meets the following pre-requisites.

- Operating Systems: All supported Windows OS versions (Windows 8.1, 10, 11, Windows Server 2012, 2016, 2019 and 2022). All supported Mac OS versions.
- All contemporary web browsers are supported: Google Chrome v40+, MS Edge, MS Internet Explorer v11, Mozilla Firefox 40+, Mozilla Firefox ESR 40+, Apple Safari (on Mac OS).

**Kodak**

Info Input Solution

**July 2023 (ver. 6.2.14)**

All trademarks and trade names used are the property of their respective holders.